

QRZ NEWS

A MONTHLY PUBLICATION OF
SOUTHERN PENNSYLVANIA AMATEUR RADIO CLUB, INC
PO BOX 422- Mount Joy, PA 17552

(Founded June 1960)

AN AFFILIATED SPECIAL SERVICE CLUB OF THE ARRL, INC.

"Public Service through Communication"

Website: WWW. K3IR.org

Email address: k3ir@arrl.net

Repeaters: 145.230 - 449.975 - Packet 145.030 - ATV 923.250, FN10se

Club site 1715 Breneman Road, Rapho Twp. (Manheim P.O. 17545 NO DELIVERY)

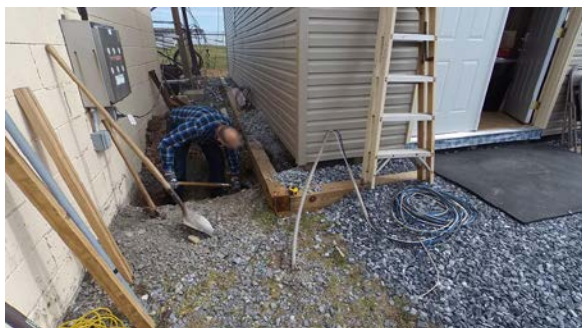
March 2016

President's Message

Small Hands Make Many Work

This month marks the beginning of the spring work projects at the site. We met at the site on Saturday the 12th to make short work of sorting out the remainder of the old storage shed, moved tower sections in preparation for grass growing season, and continued to clear out the old operating building.

We also started on the electrification of the new building. We dug holes, drilled holes, and laid copper. Every hour or so I would pop my head out from the building to see the site full of activity. We knocked out many items on our spring cleanup punch list and are 2/3 or the way done roughing in the new electrical. We have a few more boxes to hang and more AC cable to run, but we are way ahead, and it is all due to small hands and many work, or is it many hands small work. I looked out and there was Tom with a giant hole dug.



I stepped back to see most of the wire is run in the walls.



There were Gerry Wagner and Ted pounding in boxes.

| | |
|-----------------------------------|--------|
| Table of Contents | |
| President's Message | Page 1 |
| Coming Events | Page 2 |
| Editor's Notes | Page 3 |
| ARES/RACES Information | Page 3 |
| SPARC Officers, Nets, Etc. | Page 3 |
| For Sale by SPARC | Page 5 |
| Mount Joy Drill After Action Rept | Page 6 |



Next thing I know Dave Payne has punched through the repeater building wall and has most of the power feed conduit hung and run.

It is great to see so many turning out to work. We had Ted and Gerry on the hammers, Peg, Harry, Jon Rudy, and Mike Warner on grounds duties. Dave Payne, the three Hartranfts, Larry and I hanging boxes and wire. A big thank you to all that helped.

We will hold another work day in April. Hopefully as we put the final touches on the electrical in preparation for final inspection. We have plenty other tasks to do. We still need to demolish and haul the old building. We need to run and route the RF cables from the various towers. We need to finish the house keeping efforts around the site and in the repeater building.

Most importantly we need to continue with this great spring momentum to finish our goals early so we can again be a functioning radio club at our site in our new building.

Your President

Kevin Lampo, K3LLC

Coming Events

Tuesday 22 March 2016 7:00PM

Regular SPARC membership meeting at the Rapho Twp. Municipal Bldg. The technical topic for March is still pending.

We will be talking about the site improvement tasks to be performed at the site, but that is in the business portion of the meeting.

Monthly Breakfast

The second Saturday of every month at 0800 is a SPARC breakfast at Gus's Keystone Restaurant, 1050 W. Main St, Mt Joy, PA.

Contact [Gerry Wagner, KB3SSZ](mailto:Gerry.Wagner@KB3SSZ), for more details. Everyone interested in Amateur Radio is invited to attend. See <http://guskeystone.com/> for restaurant details.

Other Events

18 March 2016 Sunrise at the North Pole. The Sun appears on the horizon and is visible all day. The edge of the Sun is visible at the horizon.

20 March 2016 12:30AM EDT Spring Equinox

General License Class to be held in New Oxford, PA at the Cross Keys Villlage. Classes are Saturday mornings from 9:30 AM to 11:30 AM from March 26, through May 14, with testing on May 21.

Note that the instructors will be Riley Hollingsworth, K4ZDH, and Perry Wood, WB3JKT.

Register with Rich Harley, N3BVT, at reharley16@gmail.com

Editor's Notes

SPARC and other local area radio clubs recognize that most newly licensed Amateurs need more help to get active on the air. The Keystone VHF club runs a weekly ELMER net on their 146.97MHz repeater Tuesday nights at 9:00PM. at 9 PM following the digital Net, we will hold an **ELMER NET**

“this NET is for newer HAMs and anyone else who may have questions, or wish to discuss projects.”

From Sandra Goodman

[slgoodman1@verizon.net]

The South Mountain Radio Amateurs have presented in person Elmering sessions. The problem exposed there was that new hams know they need help, but aren't sure what questions to ask. This is the same problem I note when I have posted general requests for article topics for this newsletter. Only a very few responders to what is needed.

We need to keep thinking of ways to solve this dilemma.

I need articles for publication in the newsletter. SPARC membership is not a requirement to become an author. QRZ News distribution is about 265 copies in the U.S., Canada, and Europe.

73,

George, W3FEY

ARES/RACES



As part of the SPARC commitment to emergency communications, the SPARC repeater system is maintained as available for linking with other area repeaters.

Lancaster County RACES VHF Net is held on the first Tuesday of the month at 2030 hours local time on the 145.310 MHz repeater in Rawlinsville.

The Lancaster County primary ARES/RACES repeater is on 145.310 MHz with minus offset and 118.8 PL.

Pennsylvania RACES HF Nets are held at 3993.5 kHz LSB on all Sundays except holidays.

The statewide net is on the first Sunday of the month at 0800 hours local time.

The Central Area (including Lancaster County) net is at 08:30 local time.

EPA NBEMS Net, Tuesday, 7:30pm local EST,
3.5920mhz Mode: Olivia 8/500 1khz,
Net Mgr: WA3WSJ@arrl.net

SPARC Nets

[SPARC holds nets every Tuesday at 2100](#)

local time on 145.230 MHz minus offset and PL of 118.8. The [449.975MHz](#) repeater is linked to the 2m repeater for the net.

Club Officers

President Kevin Lampo – [K3LLC](#)

Vice President Scott Lithgow – [KN3A](#)

Secretary –Peg Hamm –[KB3SCA](#)
Treasurer –David St. Pierre - [AB3VJ](#)
Repeater Trustee - Dave Payne - [N3LOM](#)

Membership Info Update Request

Please send all changes of address, email, and ham status to me for the MDB to Gerry Wagner at 1309 Willow Creek Drive, Mount Joy, PA 17552 or Gerry.Wagner@ComCast.Net, Cell=717-344-1427,

Home Phone=717-653-0659 (Fax Opt); Skype
Thanks Gerry Wagner KB3SSZ

Nearby Nets of Local Interest

If you need information on access tones etc, the referenced web sites below will usually provide the information needed. For more information, see <http://arc-c-inc.org/arc-fdbas.html>

Monday [Ephrata Area Repeater Society](#) Net

9:00 PM on 145.450MHz.

Monday [Keystone VHF Club](#) Combined Club & ARES/RACES Net 8:30PM on 146.970MHz.

[Monday South Mountain Radio Amateurs](#)

SMRA Club Net9:00PM on [145.430MHz](#)

SSB net 9:00PM on 146.210MHz. Net has been cancelled.

**Tuesday [Digital Net](#) 8:00 PM on the York 146.970MHz Repeater -- This NET is for practicing Digital Communications
NCS: Dick Goodman WA3USG
backup NCS: Jack Dellinger KC3JD or whoever starts the net.**

At 9 PM following the digital Net, we will hold an **ELMER NET** on the 146.97 MHz repeater, PL 123.0 HZ this NET is for newer HAMs and anyone else who may have questions, or wish to discuss projects.

Morse Code Net Tuesday, 2000 local time (8:00p). [SMRA](#) repeater 145.430- (67.0 Hz) with alternate frequency of 146.460+ (1,000 kHz offset, tone 67.0 Hz)

Wednesday York County SSB Net 7:45PM on 50.135MHz. Informal net getting started. Contact Steve Cruse, K3WHC, for more information.

Wednesday [Pottstown Area Amateur Radio Club](#) 8:30PM 50.130MHz Contact [Leonard, WV3P](#) for more information.

Wednesday [Red Rose Repeater Association Net](#)9:00PM on 147.015MHz.

Wednesday [QCWA Net](#)9:00PM on 146.97MHz.

Thursday [Lancaster Radio Transmitting Society Net](#)9:00 PM on 145.390MHz

PACKRAT VHF/UHF NETS

Visit the Mt Airy VHF Radio Club at: <http://packratvhf.com/airtimes.htm> for the latest information on VHF/UHF nets.

NTS Eastern Area Phone net

3.917 at 4:00 PM daily for traffic going to EPA, MDC, WPA and Maryland. We have a callup, pass any traffic, after that a round of comments. Traffic manager is WA3QPX. Net could use more checkins from EPA as we normally only get one checkin from EPA and

sometimes none. This is where the Fone traffic for EPA net normally comes from. Any questions I will be on 3.917 at 4:00 PM. 73 , [Paul, WA3QPX](#)



Two EPA Nets Now Accessible via Echolink
Posted By: [egroups_n3sw](#) [egroups_n3sw](#)
Mon Aug 27, 2012 11:40 pm
<>The EPA AA3RG and Echolink Traffic Net (EAETN) has been accessible since its inception via Echolink at node AA3RG-R (#149493). See the group Calendar for more information. [*Thursday 8:00PM*]
<>Now the Capital Area Traffic Net (CATN) is also accessible via Echolink at node N3TWT-R (#743026). See the group Calendar for more information. All (*licensed hams*) are welcome to join in on these nets.
73 -Scott N3SW EPA STM-

AA3C note: To visit our group on the web, go to NTS-EPA Group web site:
<http://groups.yahoo.com/group/nts-epa/>
Both nets will utilize the 146.640(tx-) MHz.
Transmit access tone: 82.5 Hz.
AA3RG Repeater. <http://www.aa3rg.org/>

QRZ News Publication

QRZ News is published monthly. The deadline for submission of items for publication is 11

days before the regular membership meeting on the fourth Tuesday of each month. If material is not copy and paste ready for publication, more lead time is required.

We operate on an exchange basis with other not for profit publications. Articles printed in QRZ News may be reprinted in a not for profit publication provided proper credit is given. QRZ News is archived at <http://www.k3ir.org/>

For Sale By SPARC

SPARC has the following items for sale to members or other interested Hams.

12 sections of used Rohn 25 tower - 10 foot sections - will need to be sanded and painted

2 top sections - tapered at top.

Most of the tower sections have surface rust but are solid. The top sections have had some of the cross bracing cut to accommodate rotor installation.

Looking for \$20 per section. Delivery can be arranged.

Also if you are building wire antennas we have a large quantity of insulated wire from 14 gauge to 18 gauge.

Contact Kevin, K3LLC or Harry, WA3FFK



FOR IMMEDIATE RELEASE:

March 16, 16

Email: EMA@mountjoypa.org
<http://mountjoyborough.com/emergency-services/ema/overview/>

MOUNT JOY BOROUGH EMERGENCY MANAGEMENT AGENCY CONDUCTS READINESS WORKSHOP -READY MOUNT JOY 4-

[Mount Joy, Pa.] On March 16, 16 Members of Mount joy Borough Emergency Management Agency (EMA) provided the forth in a series of public readiness workshops at the Lancaster County Public Safety Training Center.

EMA Staff and program facilitators presented a three-hour workshop designed to encourage the general public to be “Ready” for a natural or man-made disaster.

Attendees represented Lancaster, Berks, York, Lebanon, and Dauphin counties.

For information on “Ready Mount Joy 5” contact EMA@mountjoypa.com

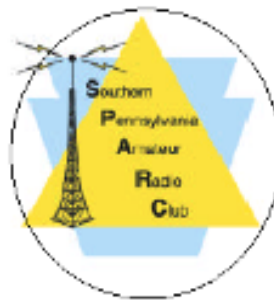
###



Alan Wolf collecting questions from the students during the presentation.



Displays included water purification and storage, food storage, solar energy, items to carry in your car, community preparedness teams, search and rescue, Red Cross “Safe and Well”, communication, weather monitoring, Hands Only CPR, personal safety and home security.



Mount
Joy
Borough
Emergency
Management
(MJY
EMA),

and

Southern Pennsylvania Amateur Radio Club (SPARC) Present:

“READY MOUNT JOY 4”

Are You Ready for a Three-Day Snow and Ice Storm?

February 21, 2016 - 1 PM – 4 PM
Lancaster County Public Safety Training Center (LCPSTC)

Forth in a series of Workshops to encourage and enable the “Ready Mindset”.

Discussion, Collaboration, and Equipment your neighbors use to be ready.

- Presentations will be offered based on the requests of those who register. This is an opportunity to meet and collaborate with other members of the community on readiness issues of common interest.
- Personal Readiness covering food, water, shelter, light, power and issues such as home safety, security, neighborhood watch, and welfare checks.
- Personal Communications information to provide basic information and low cost personal communication (FRS, GMRS) and Amateur (HAM) Radio options.

This was a FREE event provided to the public by Mount Joy EMA. and Southern Pennsylvania Amateur Radio Club (SPARC). All presenters are EMA or SPARC members and donate their time.

Read ahead and reference sources :

- [FEMA Preparedness - CLICK HERE](#)
- [Emergency Communications - CLICK HERE](#)

Open to the general public – no experience or affiliation is necessary.
Bring any equipment items you wish for display and demonstration.

- [Lancaster County Public Safety Training Center \(LCPSTC\)located at 101 Champ Blvd.Manheim, PA 17545](#)
[CLICK HERE FOR MAP TO LCPSTC](#)

After action report by Peg Hamm, KB3SCA